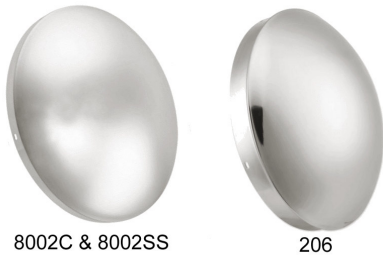




Wheel caps and covers front
Front hub caps



No notches

- 8002C Chrome steel 3/8" lip for steel wheels
- 8002SS Stainless steel 3/8" lip for steel wheels
- 206 Chrome steel 3/4" lip for aluminum wheels

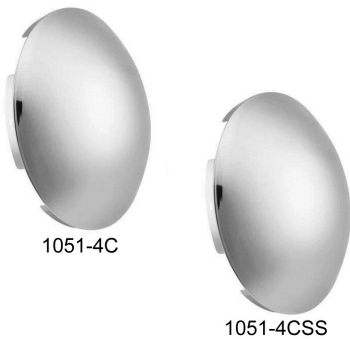
Wheel caps and covers front
Front hub caps



4 notch cutout 3/8" lip for steel wheels

- 1051-3C Chrome steel
- 1051-3CN Chrome steel pointed
- 1051-3CSS Stainless steel
- 1051-3CNSS Stainless steel pointed

Wheel caps and covers front
Front hub caps



5 notch cutout 3/8" lip for steel wheels

- 1051-4C Chrome steel
- 1051-4CSS Stainless steel

Wheel caps and covers front
Front hub caps



6 multi notch cutout 3/4" lip fits 4 5 and 6 notch hubs for aluminum wheels

- 205 Chrome steel
- 205S Stainless steel
- 205-1 Chrome steel 1 3/8" extended height
- 205S-1 Stainless steel 1 3/8" extended height
- 205H-1 Chrome steel with 4 3/4" meter hole
- 205-2 Chrome steel pointed



Wheel caps and covers front
Front hub caps



6 notch even space cutout 5/8" lip and 3/4" extended height for steel wheels

- 207 Chrome steel
- 207S Stainless steel

Wheel caps and covers front
Front hub caps



6 multi notch cutout and 3/8" lip fits 4 5 and 6 notch hubs for steel wheels

- 10660 Chrome steel
- 10660S Stainless steel
- 10660CN Chrome steel pointed
- 10660SCN Stainless steel pointed
- 10661 Chrome steel with 4 3/4" meter hole
- 10661S Stainless steel with 4 3/4" meter hole

Wheel caps and covers front
Front hub caps



6 multi notch cutout 3/8" lip and 1/2" extended height

- 1051-12C Chrome steel
- 1051-12CS Stainless steel

Wheel caps and covers front
Front hub caps



10660GG



10663GG



10661GG



10662GG

6 multi notch cutout with 7/16" lip fits steel and aluminum wheels 2" high narrow tabs 6 clips

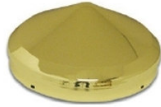
- 10660GG chrome steel
- 10661GG chrome steel with hub meter hole
- 10662GG gold colored steel
- 10663GG gold colored steel with hub meter hole



Wheel caps and covers front Front hub caps



Full Moon



Pointed



Standard



Pinwheel

6 multi notch cutout with 7/16" lip fits steel wheels 3" high includes 4 clips

- 10700 chrome steel pointed standard
- 10701 gold colored steel pointed standard
- 10702 stainless steel pointed standard
- 10760 chrome steel standard
- 10761 gold colored steel standard
- 10763 stainless steel standard
- 10672 Chrome steel full moon
- 10703 chrome steel pin wheel
- 10704 stainless steel pin wheel

Wheel caps and covers front Front hub caps



Full moon



Pointed



Standard



Pin wheel

6 multi notch cutout with 1" lip fits aluminum wheels 3" high 4 clips

- 10770 chrome steel
- 10771 gold colored steel
- 10773 stainless steel standard
- 10750 chrome steel pointed
- 10751 gold colored steel pointed
- 10752 stainless steel pointed
- 10753 chrome steel pin wheel
- 10754 stainless steel pin wheel

Wheel caps and covers front Front hub caps



6 multi notch cutout with 3 bar wing spinner chrome steel

- 10850 straight left hand 7/16" lip fits steel wheels
- 10851 straight right hand 7/16" lip fits steel wheels
- 10852 swept left hand 7/16" lip fits steel wheels
- 10853 swept right hand 7/16" lip fits steel wheels
- 10860 straight left hand 1" lip fits aluminum wheels
- 10861 straight right hand 1" lip fits aluminum wheels
- 10862 swept left hand 1" lip fits aluminum wheels
- 10863 swept right hand 1" lip fits aluminum wheels

Wheel caps and covers front Front wheel covers



10 lug 1 1/2" or 33mm

- 220 fits 20" wheels 10 hole style
- 225 fits 22 1/2" wheels 10 hole style
- 230 fits 24 1/2" wheels 10 hole style
- 225H fits 22 1/2" wheels 2 hand hole style
- 230H fits 24 1/2" wheels 2 hand hole style



Wheel caps and covers front
Front axle covers



Chrome ABS plastic with removable hub cap

- Threaded nut covers
- Fits 33mm 10 lug hub piloted steel or aluminum wheels
- Fits 20" / 22 1/2" / 24 1/2" wheels
- 02170P front
- 02170P-1 replacement hub cap for front
- 03440P rear
- 03440P-1 replacement hub cap for rear

Wheel caps and covers front
Front axle covers



3 piece with removable cap and beauty ring chrome steel 20" / 22 1/2" / 24 1/2" wheels

- 0215-353 fits 8 lug 33mm nut
- 0215-354 fits 10 lug 33mm 38mm nuts
- 0215-360 fits 10 lug 1 1/2" nut

Wheel caps and covers front
Front axle covers



3 piece with removable hub hole cap and beauty ring chrome steel 20" / 22 1/2" / 24 1/2" wheels

- 0216-353 fits 8 lug 33mm nut
- 0216-354 fits 10 lug 33mm 38mm nuts
- 0216-360 fits 10 lug 1 1/2" nut

Wheel caps and covers front
Front axle covers



3 piece with removable pointed cap and beauty ring chrome steel fits 20" / 22 1/2" / 24 1/2" wheels

- 0214-353 fits 8 lug 33mm nut
- 0214-354 fits 10 lug 33mm 38mm nuts
- 0214-355 fits 10 lug 1 1/2" nut
- 0214-360 fits 10 lug 1 1/2"



Wheel caps and covers front
Front axle covers



3 piece with removable cap and beauty ring stainless steel fits 20" / 22 1/2" / 24 1/2" wheels

- 0215S fits 10 lug 1 1/2" nut
- 0215S-353S fits 8 lug 33mm nut
- 0215S-354S fits 10 lug 33mm 38mm nuts
- 0215S-360S fits 10 lug 1 1/2" nut

Wheel caps and covers front
Front axle covers



3 piece with removable pointed cap and beauty ring stainless steel fits 20" / 22 1/2" / 24 1/2" wheels

- 0214S-354S fits 10 lug 33mm 38mm nuts
- 0214S-355S fits 10 lug 1 1/2" nut
- 0214S-360S fits 10 lug 1 1/2" nut

Wheel caps and covers front
Front axle covers



2 piece with beauty ring fits 10 lug 1-1/2" nut 20"/ 22-1/2"/ 24-1/2" wheels

- 210 Chrome steel
- 2 piece with beauty ring
- 215 Chrome steel
- 3 piece with removable cap and beauty ring
- 216 Chrome steel
- 3 piece with removable hub hole cap and beauty ring

Wheel caps and covers front
Front axle covers



2 piece with beauty ring fits 20"/ 22-1/2"/ 24-1/2" wheels

- 0210-353 fits 8 lug 33mm nut chrome steel
- 0210-354 fits 10 lug 33mm 38mm nuts chrome steel
- 0210-360 fits 10 lug 1 1/2" nut chrome steel
- 0210S fits 10 lug 1 1/2" nut stainless steel
- 0210S-353S fits 8 lug 33mm nut stainless steel
- 0210S-354S fits 10 lug 33mm 38mm nuts stainless steel
- 0210S-360S fits 10 lug 1 1/2" nut stainless steel



Wheel caps and covers front
Front axle covers



Universal hideaway chrome steel 4 1/2" high

- 40070 5 large 5 small ring holes for steel wheels
- 40071 5 large 5 small ring holes for aluminum wheels
- 40074 8 32mm diameter ring holes for pilot uni mount wheels
- 40075 10 32mm diameter ring holes for pilot uni mount wheels

Wheel caps and covers front
Front axle covers



Universal hideaway stainless steel 4 1/2" high

- 40150 5 large 5 small ring holes for steel wheels
- 40151 5 large 5 small ring holes for aluminum wheels
- 40052 8 32mm diameter ring holes for pilot uni mount wheels
- 40053 10 32mm diameter ring holes for pilot uni mount wheels

Wheel caps and covers rear
Rear hub caps



7 1/4" diameter axle with 12 (1/2") or 8 (9/16") studs 7 1/4" inside diameter

- 8001-1C Chrome steel
- 8001-1CSS Stainless steel
- 8001-1CN Chrome steel pointed
- 8001-1CNSS Stainless steel pointed
- 8001-4C Chrome steel with hub hole

Wheel caps and covers rear
Rear hub caps



8 1/2" diameter axle with 8 (5/8") studs 8" inside diameter

- 8001-2C Chrome steel
- 8001-2CSS Stainless steel
- 8001-2CN Chrome steel pointed
- 8001-2CNSS Stainless steel pointed
- 8001-5C With hub hole chrome steel
- 8001-5CSS With hub hole stainless steel



Wheel caps and covers rear
Rear hub caps



8 1/2" diameter axle with 8 (3/4") studs 8 1/8" inside diameter

- 8001-3C Chrome steel
- 8001-3CSS Stainless steel
- 8001-3CN Chrome steel pointed
- 8001-3CNSS Stainless steel pointed
- 8001-6C Chrome steel
- with hub hole

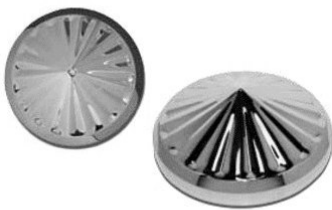
Wheel caps and covers rear
Rear hub caps



Special fit hub caps see part number for discription

- 326 Chrome steel 8 1/8" diameter axle
- With 8 each 3/4" studs
- For International 8 1/8" inside diameter
- 326S Stainless steel 8 1/8" diameter axle
- With 8 each 3/4" studs
- For International 8 1/8" inside diameter
- 328 Chrome steel 8 9/16" diameter
- Mack 44000 lb axle CH series
- 8 1/2" inside diameter

Wheel caps and covers rear
Rear hub caps



Pin wheel style chrome steel

- 20133 8" inside diameter 3 3/8" high
- 8 1/2" diameter axle 8 5/8" studs
- 20153 8 1/4" inside diameter 3 3/8" high
- 8 1/2" diameter axle 8 3/4" studs
- 20163 7 1/4" inside diameter 3 3/8" high
- 7 1/4" diameter axle 12 1/2" studs

Wheel caps and covers rear
Rear hub caps



Pin wheel style stainless steel

- 20134 8" inside diameter 3 3/8" high
- 8 1/2" diameter axle 8 5/8" studs
- 20154 8 1/4" inside diameter 3 3/8" high
- 8 1/2" diameter axle 8 3/4" studs
- 20164 7 1/4" inside diameter 3 3/8" high
- 7 1/4" diameter axle 12 1/2" studs



Wheel caps and covers rear
Rear hub caps



6" and 6 1/2" inside diameter mid size trucks

- 20110 Chrome steel 6 1/2" inside diameter
- Fits mid size trucks
- 20120 Chrome steel 6" inside diameter 2 5/8" high
- Fits Freightliner International Ford GMC tow trucks

Wheel caps and covers rear
Hub cap spinners



Winged spinner 3 bars chrome steel

- 20261 straight right hand 7 1/4" diameter axle 12 1/2" studs
- 20262 swept left hand 7 1/4" diameter axle 12 1/2" studs
- 20263 swept right hand 7 1/4" diameter axle 12 1/2" studs
- 20271 straight right hand 8 1/2" diameter axle 8 5/8" studs
- 20272 swept left hand 8 1/2" diameter axle 8 5/8" studs
- 20273 swept right hand 8 1/2" diameter axle 8 5/8" studs
- 20281 straight right hand 8 1/2" diameter axle 8 3/4" studs
- 20282 swept left hand 8 1/2" diameter axle 8 3/4" studs
- 20283 swept right hand 8 1/2" diameter axle 8 3/4" studs

Wheel caps and covers rear
Rear axle covers



Rear axle cover set chrome plastic with nut covers

- 0AC-03-B with bullet style nut covers
- 0AC-03-T with top hat style nut covers
- 0AC-03-V with vortex style nut covers

Wheel caps and covers rear
Rear axle covers



3 piece with removable cap and beauty ring chrome steel fits 20" / 22 1/2" / 24 1/2" wheels

- 340 fits 10 lug 1 1/2" nut
- for steel wheels
- 341 fits 10 lug 1 1/2" nut
- for aluminum wheels
- 0340-353 fits 8 lug 33mm nut
- for steel or aluminum wheels
- 0340-354 fits 10 lug 33mm or 38mm nuts
- for steel or aluminum wheels



Wheel caps and covers rear
Rear axle covers

Wheel caps and covers rear
Rear axle covers



3 piece with removable pointed cap for steel or aluminum wheels 20" / 22 1/2" / 24 1/2" wheels

- 0337-353 Chrome steel pointed cap
- Fits 8 lug 33mm nut
- 0337-354 Chrome steel pointed cap
- Fits 10 lug 33mm or 38mm nut
- 0337-355 Chrome steel pointed cap
- Fits 10 lug 1 1/2" nut
- 0337-360 Chrome steel pointed cap
- Fits 10 lug 1 1/2" nut

3 piece with removable cap for steel or aluminum wheels 20" / 22 1/2" / 24 1/2" wheels

- 0337S-353S Stainless steel pointed cap
- Fits 8 lug 33mm nut
- 0337S-354S Stainless steel pointed cap
- Fits 10 lug 33mm or 38mm nut
- 0337S-355S Stainless steel pointed cap
- Fits 10 lug 1 1/2" nut
- 0337S-360S Stainless steel pointed cap
- Fits 10 lug 1 1/2" nut

Wheel caps and covers rear
Rear axle covers

Wheel caps and covers rear
Rear axle covers



3 piece with removable cap and beauty ring stainless steel fits 20" / 22 1/2" / 24 1/2" wheels

- 0340S fits 10 lug 1 1/2" nut
- For steel wheels
- 0340S-353S fits 8 lug 33mm nut
- For steel or aluminum wheels
- 0340S-354S fits 10 lug 33mm or 38mm nuts
- For steel or aluminum wheels
- 0341S fits 10 lug 1 1/2" nut
- For aluminum wheels

3 piece with meter hole removable cap and beauty ring chrome steel fits 20" / 22 1/2" / 24 1/2" wheels

- 0340-353 fits 8 lug 33mm nut
- For steel or aluminum wheels
- 0350-354 fits 10 lug 33mm nut
- For steel or aluminum wheels
- 0350-355 fits 10 lug 1 1/2" nut
- For steel wheels
- 0351-360 fits 10 lug 1 1/2" nut
- For aluminum wheels



Wheel caps and covers rear
Rear axle covers



2 piece with beauty ring chrome steel fits 20" / 22 1/2" / 24 1/2" wheels

- 345 fits 10 lug 1 1/2" nut
- For steel wheels
- 346 fits 10 lug 1 1/2" nut
- For aluminum wheels
- 0345-353 fits 8 lug 33mm nut
- For steel or aluminum wheels
- 0345-354 fits 10 lug 33mm or 38mm nuts
- For steel or aluminum wheels

Wheel caps and covers rear
Rear axle covers



2 piece with beauty ring stainless steel fits 20" / 22 1/2" / 24 1/2" wheels

- 345S fits 10 lug 1 1/2" nut
- For steel wheels
- 346S fits 10 lug 1 1/2" nut
- For aluminum wheels
- 0345S-353S fits 8 lug 33mm nut
- For steel or aluminum wheels
- 0345S-354S fits 10 lug 33mm or 38mm nuts
- For steel or aluminum wheels

Wheel caps and covers rear
Rear axle covers



2 piece with unitized beauty ring for steel wheels only 20" / 22 1/2" / 24 1/2" wheels

- 0338S Stainless steel
- Fits 10 lug 1 1/2" 33mm or 38mm
- 0338S-1 Stainless steel
- Fits 10 lug 1 1/2" nuts
- 0338SH Stainless steel
- fits 10 lug 1 1/2" 33mm or 38mm nuts
- 0339S Stainless steel
- Fits 10 lug 1 1/2" 33mm or 38mm nuts

Wheel caps and covers rear
Rear axle covers



Beauty ring only

- 0353S-338S Stainless steel
- 0353-338 Chrome steel
- For hub piloted wheels
- fits 8 lug 33mm nut steel or aluminum wheels
- 20/ 22 1/2/ 24 1/2"
- 0354S-3310S Stainless steel
- 0354-3310 Chrome steel
- For hub piloted wheel
- fits 10 lug 33mm or 38mm nuts
- 20/ 22 1/2/ 24 1/2"



Wheel caps and covers rear
Rear axle covers

Wheel caps and covers rear
Rear axle covers



Universal hideaway chrome steel 9 1/2" high

Universal hideaway stainless steel 9 1/2" high

- 40080 For steel wheels
- 5 large 5 small ring holes
- 40081 For aluminum wheels
- 5 large 5 small ring holes
- 40082 For pilot uni mount wheels
- 8 32mm diameter ring holes
- 40083 For pilot uni mount wheels
- 10 32mm diameter ring holes
- 40089 High hat only
- Fits hideaway rear axle cover sets

- 40090 For steel wheels
- 5 large 5 small ring holes
- 40091 For aluminum wheels
- 5 large 5 small ring holes
- 40092 For pilot uni mount wheels
- 8 32mm diameter ring holes
- 40093 For pilot uni mount wheels
- 10 32mm diameter ring holes
- 40099 High hat only
- Fits hideaway rear axle cover sets

Wheel caps and covers rear
Rear axle covers

Wheel caps and covers trailers
Trailer hub caps



Universal hideaway axle cover beauty ring only

9 1/4" inside diameter with clips

- 40072 For pilot uni mount wheels
- 8 with 32mm diameter
- 40073 For pilot uni mount wheels
- 10 with 32mm diameter
- 40084 For Aluminum wheels
- 5 large 5 small ring holes
- 40085 For steel wheels
- 5 large 5 small ring holes

- 8074C Chrome steel
- 8074S Stainless steel



Wheel caps and covers trailers
Trailer hub cap adapters and clips



Hub cap adapters and hub cap clips for use on trailer axles

- 10584 Mounts to end of axle
- Uses 8" hub cap part number 8001-2C 8" inside diameter
- 10586 Mounts to end of axle
- Fits 2005 Stemco hub seal #340-4195
- 10582 Clip Set for Trailer Hub Caps
- Used on Stemco axle cap to hold regular rear hub cap
- To hold 7 1/4" diameter hub cap 8001-1C
- 10583 Clip Set for Trailer Hub Caps
- Used on Stemco axle cap to hold regular rear hub cap
- To hold 8" diameter hub cap 8001-2C
- 8074-2 Replacement clips for use with 8074C trailer hub cap